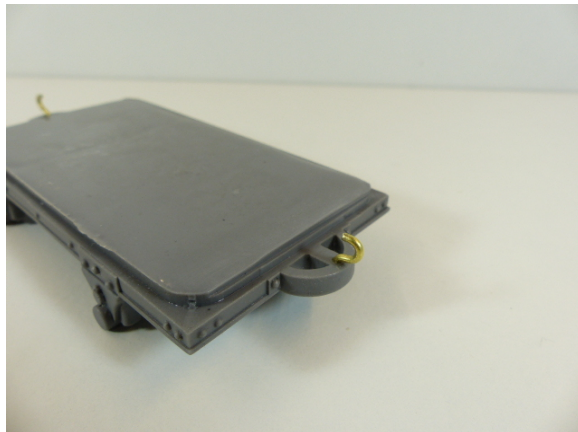


1. Trim the buffer and chassis corner spru to the chassis rebate.



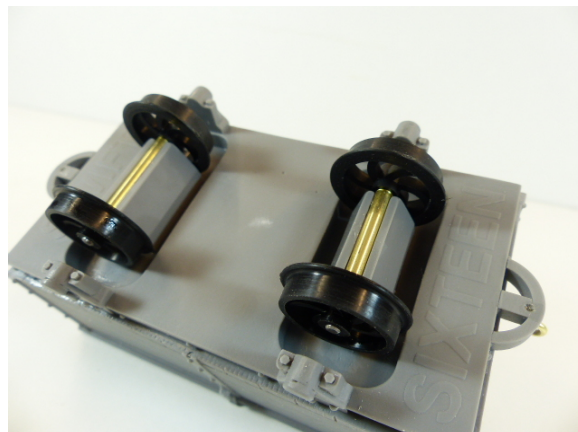
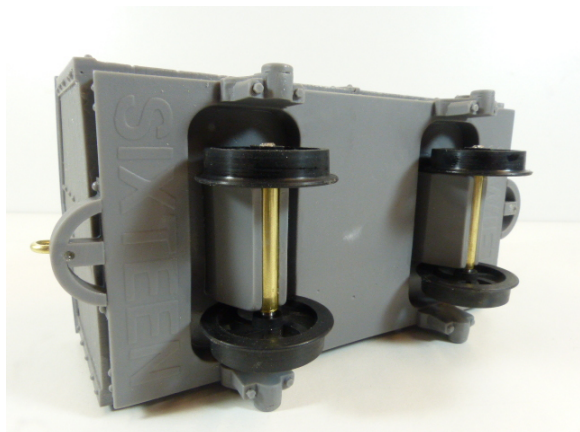
2. Make up two hooks from the brass wire, drill 1.7mm holes and glue into place.



3. Glue the body to the chassis.



4. Clean up the brass axle tubes, oil the axles, assemble the wheel sets and glue into place.



FOR SMALL BOX VAN ONLY, STEP 5.

Drill two 1.7mm holes in the door handle rings. Cut and bend up a door handle from the brass wire. Glue door handle into place.

