

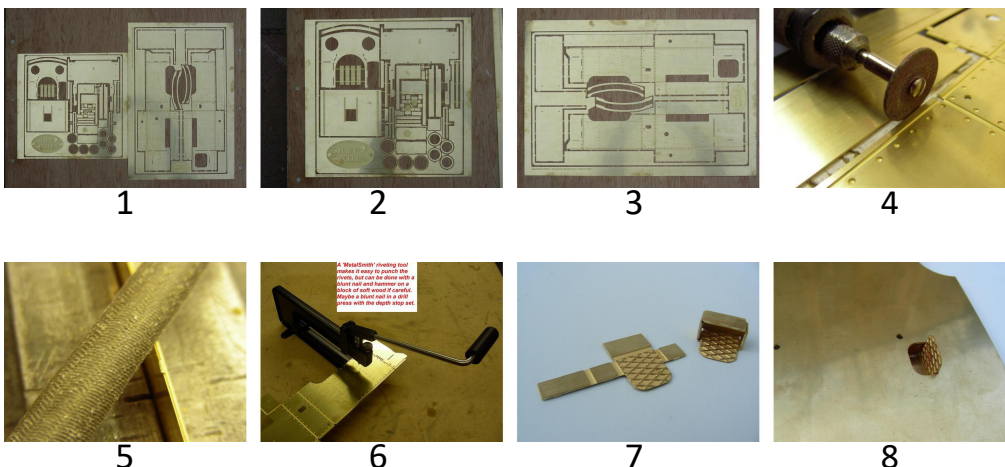
**I DO NOT recommend the use of a blow torch to build this model.**

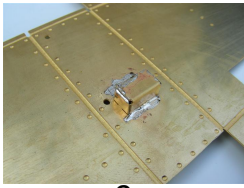
This body kit is not a hard kit to build, in some respects it is easier than most brass body kits on the market due to its low parts count, extensive use of fold lines and large parts. However, it is not a kit that I would recommend to a beginner. The list of pictures below offer a pictorial guide through the building process. I will offer very few tips, as most modellers have their own techniques and way of doing things.

I would offer the suggestion of using a 80 Watt soldering iron, Barrie Stevenson liquid flux, (available from Eileen's Emporium) and a Midland Railway Centre ([www.midrailcentre.com](http://www.midrailcentre.com)) rivet press. I DO NOT recommend the use of a blow torch to build this model, except in just one part of the construction on the top lip of the tanks (step 20). Even then, you only need a mini pencil torch to aid in a little extra help to the iron so that you are not spreading solder all over the rivet detail.

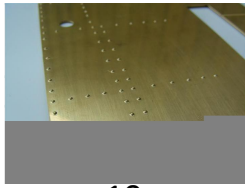
You do not need to make the body with rivet detail if you do not want to, this kit just offers the option. If you do not want the rivets, don't press them out.

It will not affect the look of the model, as the rivet etch is always on the inside of the panel and will not be seen if it is not pressed.

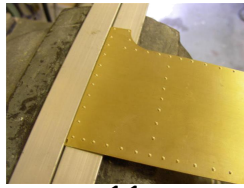




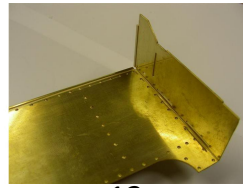
9



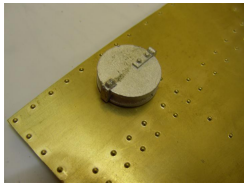
10



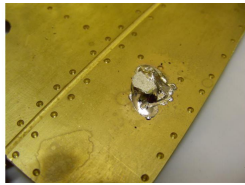
11



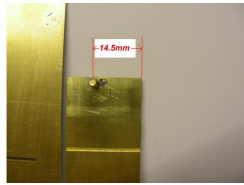
12



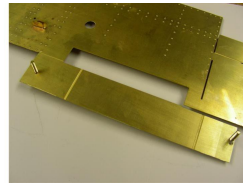
13



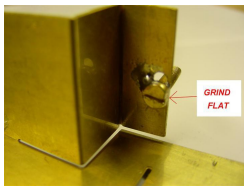
14



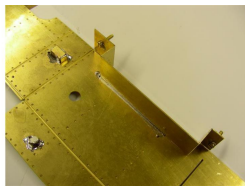
15



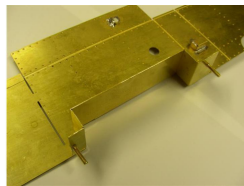
16



17



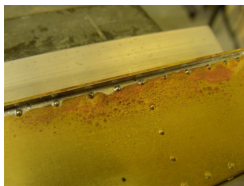
18



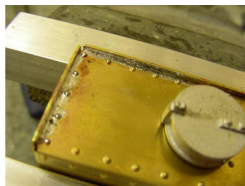
19



20



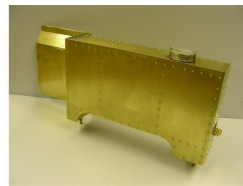
21



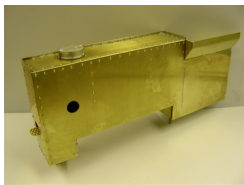
22



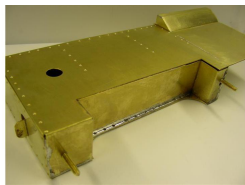
23



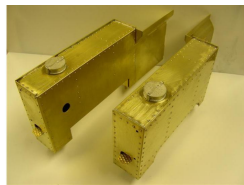
24



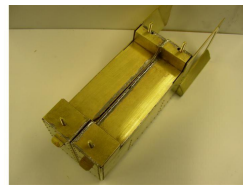
25



26



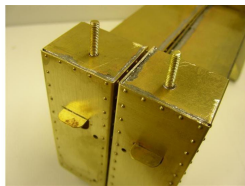
27



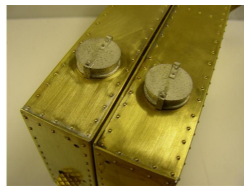
28



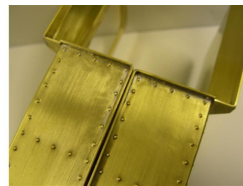
29



30



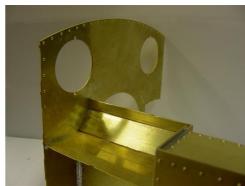
31



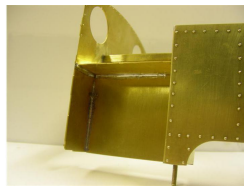
32



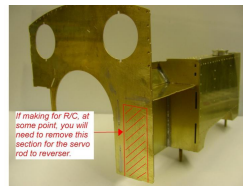
33



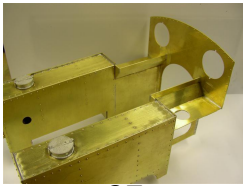
34



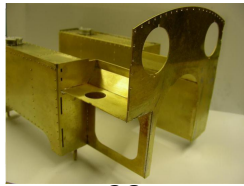
35



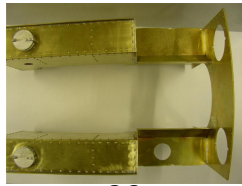
36



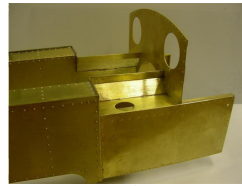
37



38



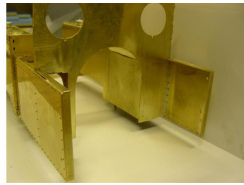
39



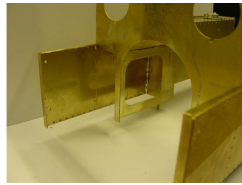
40



41



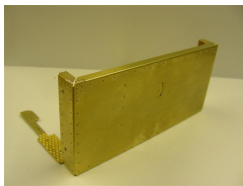
42



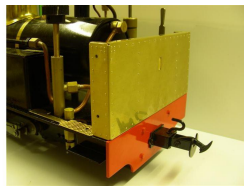
43



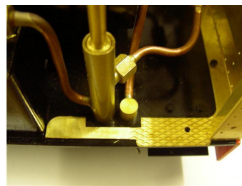
44



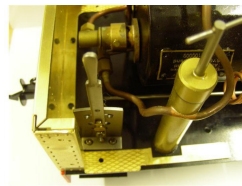
45



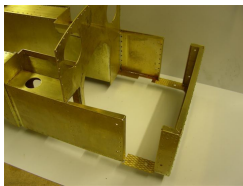
46



47



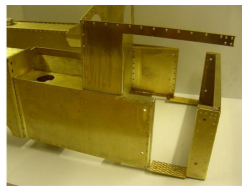
48



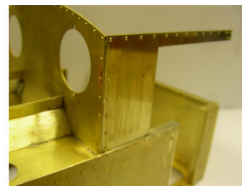
49



50



51



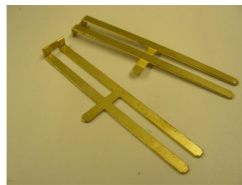
52



53



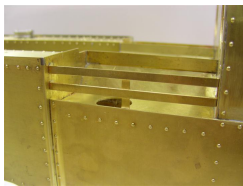
54



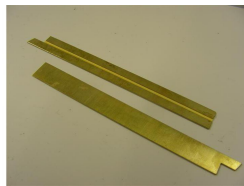
55



56



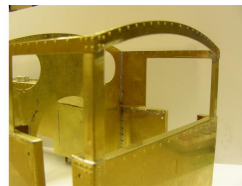
57



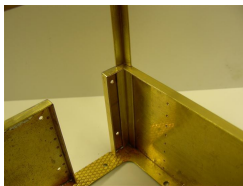
58



59



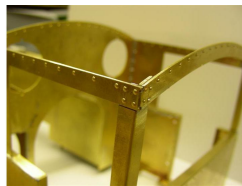
60



61



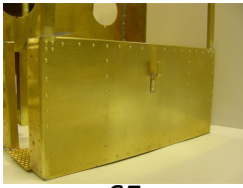
62



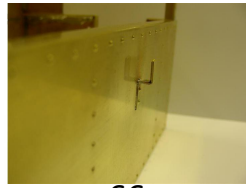
63



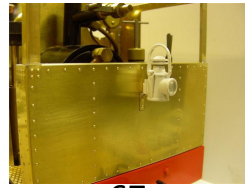
64



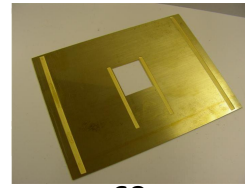
65



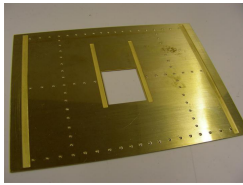
66



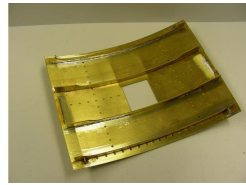
67



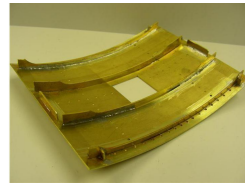
68



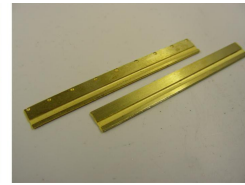
69



70



71



72



73



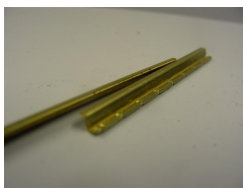
74



75



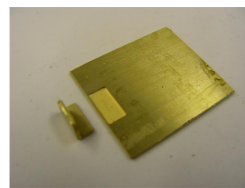
76



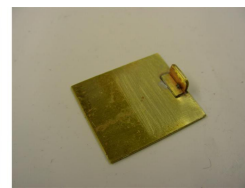
77



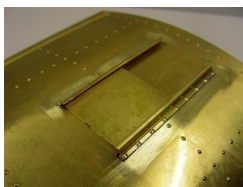
78



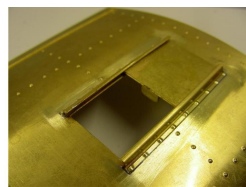
79



80



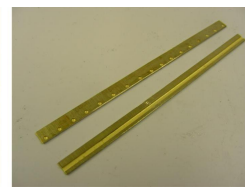
81



82



83



84



85



86



87



88



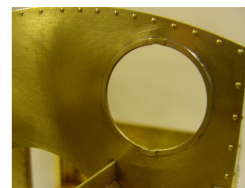
89



90



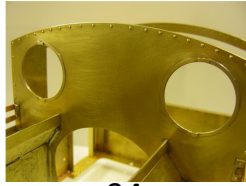
91



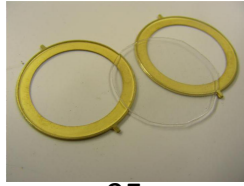
92



93



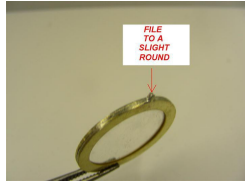
94



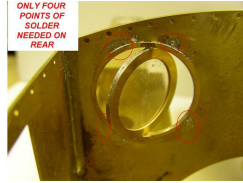
95



96



97



98



99