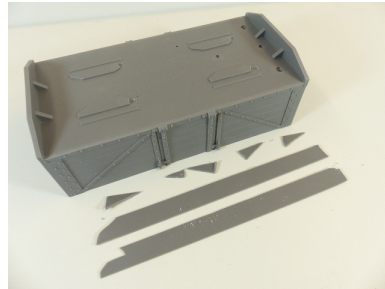
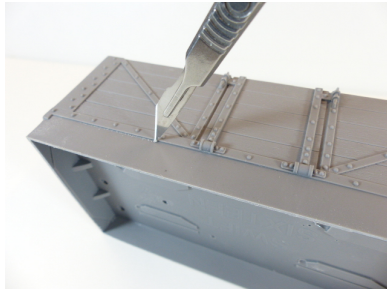


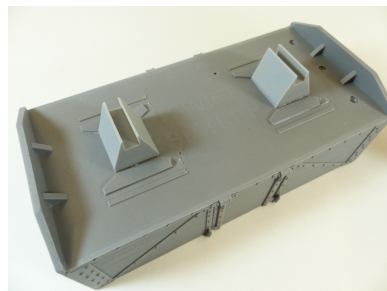
1.

With a tool of your choosing, cut away the waste resin from between the buffers. We like to score the joint with the back of a scalpel and snap off cleanly, then scrape to a good finish.



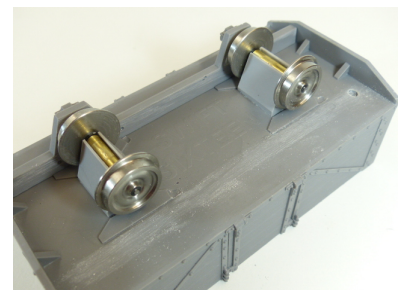
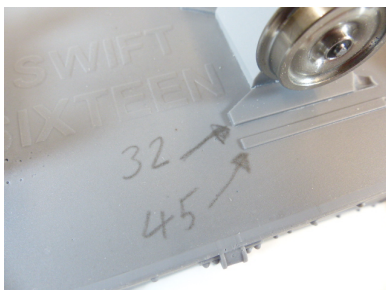
2.

Gently rub the bottoms of the axle holders on a piece of sand paper to make sure they are flat. Glue them into place, making sure they are central in space provided. Nip off the stub axle protruding from the wheel sets and glue the wheel sets into place.



3.

There are two spaced shoulders cast into the bottom of the chassis for the 'W' Irons. 32mm on the inside and 45mm on the outside. If you are fitting the optional 'I' Beam chassis rails and the wagon is being made for 32mm, you will need to trim off the shoulders made for 45mm with a scalpel blade, chisel or Dremel type tool. In both cases, give the surfaces to be glued a light sanding and glue into place.



4.

Drill a 1.7mm hole in the marked position on the buffers, lightly sand the glued surfaces and glue the buffers into place. Bend up the brass wire into your type of hook and glue the hook into the hole.

